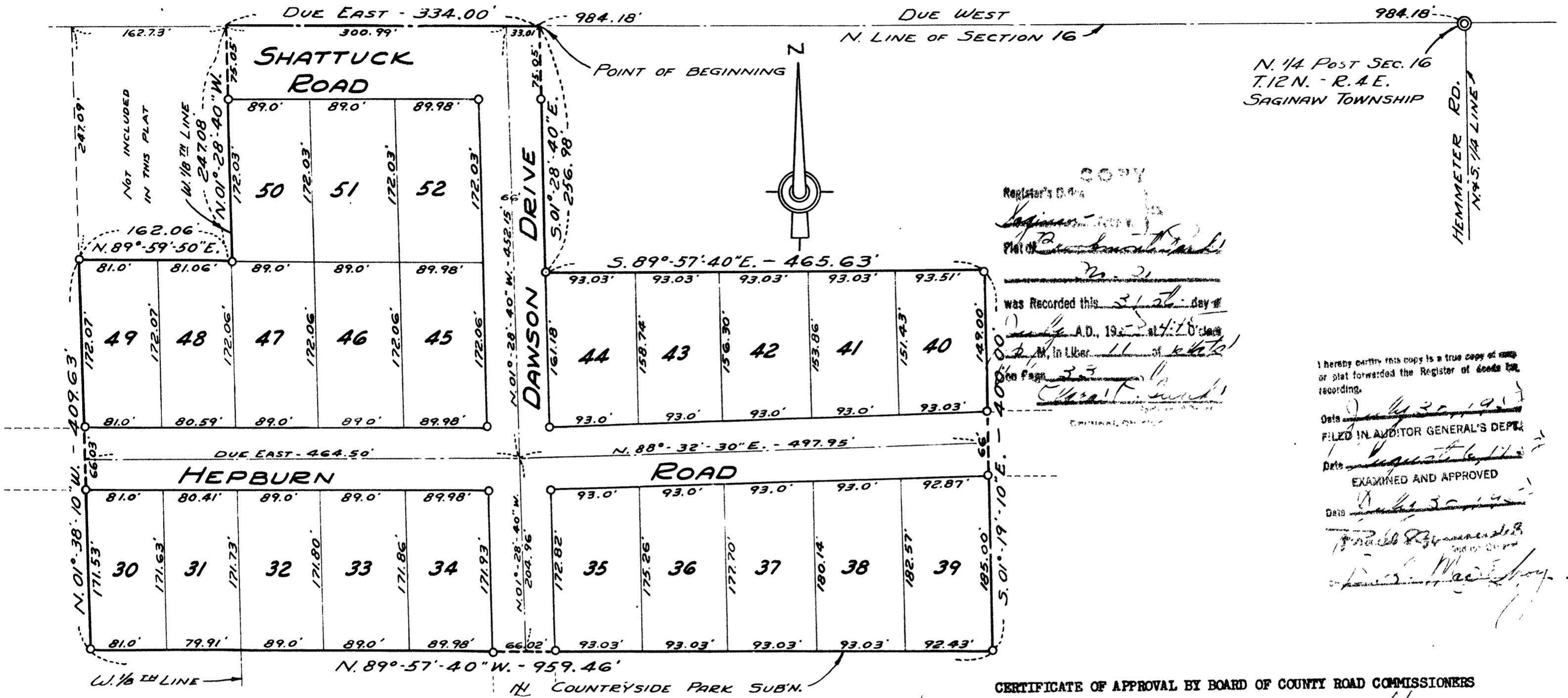


BROOKMONT PARK No. 2

A PART OF N. 1/2 OF NW 1/4 SECTION 16, T.12N.-R.4 E.
SAGINAW TOWNSHIP - SAGINAW COUNTY MICHIGAN

SCALE: 1 INCH = 100 FEET
0 50 100 200 300 400
ALL DIMENSIONS ARE GIVEN IN FEET AND DECIMALS THEREOF
THE SPICER ENGINEERING COMPANY
SAGINAW, MICHIGAN
1957



Register's Office
Saginaw County, Michigan
Plat of Brookmont Park No. 2
was Recorded this 21st day of
July A.D., 1957 at 11:18 o'clock
A.M. in Liber 11 of 462
Open Page 13
Clifford H. Spicer

I hereby certify this copy is a true copy of map or plat forwarded the Register of Deeds for recording.
Date July 20, 1957
FILED IN AUDITOR GENERAL'S DEPT.
Date August 6, 1957
EXAMINED AND APPROVED
Date July 30, 1957
Frank R. Gagnier, Auditor
Clifford H. Spicer

DEDICATION

KNOW ALL MEN BY THESE PRESENTS, That we, Earl R. Shepherd and Arlene A. Shepherd, his wife; Duane DePlonty, a single man; Clarence L. Blodgett, Sr. and Luella F. Blodgett, his wife; and Edward H. Trier and Lucille E. Trier, his wife, as proprietors, have caused the land embraced in the annexed plat to be surveyed, laid out and platted to be known as BROOKMONT PARK NO. 2, A Part of N. 1/2 of NW 1/4, Section 16, T.12 N.-R.4 E., Saginaw Township, Saginaw County, Michigan, and that the Roads and Drive as shown on said plat are hereby dedicated to the use of the public.

Earl R. Shepherd (L.S.)
Arlene A. Shepherd (L.S.)
Duane DePlonty (L.S.)
Clarence L. Blodgett, Sr. (L.S.)
Luella F. Blodgett (L.S.)
Edward H. Trier (L.S.)
Lucille E. Trier (L.S.)

Signed and Sealed in the Presence of
Estelle M. Bryan
Warren G. Wills

ACKNOWLEDGMENT

STATE OF MICHIGAN) ss.
County of Saginaw)
On this 7th day of June, 1958, before me, a Notary Public, in and for said County, appeared Earl R. Shepherd and Arlene A. Shepherd, his wife; Duane DePlonty, a single man; Clarence L. Blodgett, Sr. and Luella F. Blodgett, his wife; and Edward H. Trier and Lucille E. Trier, his wife, known to me to be the persons who executed the above dedication and acknowledged same to be their free act and deed.

Estelle M. Bryan
Notary Public, Saginaw County, Michigan
My Commission Expires May 18, 1962

DESCRIPTION

The land embraced in the annexed plat of BROOKMONT PARK NO. 2, A Part of N. 1/2 of NW 1/4, Section 16, T.12 N.-R.4 E., Saginaw Township, Saginaw County, Michigan, is described as follows: Commencing at a point on the North line of said Section, 984.18 feet Due West along said line from the North 1/4 post of said Section 16; thence S.01°-28'-40"E., 256.98 feet; thence S.89°-57'-40"E., 465.63 feet; thence S.01°-19'-10"E., 400.00 feet to the North line of Countryside Park Subdivision; thence N.89°-57'-40"W., along said North plat line extended 959.46 feet; thence N.01°-38'-10"W., 409.63 feet; thence N.89°-59'-50"E., 162.06 feet to the West 1/8th line of said Section 16; thence N.01°-28'-40"W., along said eighth line 247.08 feet to the North line of said Section 16; thence Due East along said North Section line 334.00 feet to the point of beginning. This plat contains 23 Lots numbered consecutively from 30 to 52 inclusive.

SURVEYOR'S CERTIFICATE

I hereby certify that the plat hereon delineated is a correct one and that permanent metal monuments consisting of bars not less than one-half inch in diameter and 36 inches in length, or shorter bars of not less than one-half inch in diameter lapped over each other at least 6 inches with an over-all length of not less than 36 inches, encased in a concrete cylinder at least 4 inches in diameter and 36 inches in depth have been placed at points marked thus o as thereon shown at all angles in the boundaries of the land platted, at all intersections of streets, and at the intersections of streets with the boundaries of the plat as shown on said plat.

Clifford H. Spicer - Registered Land Surveyor

CERTIFICATE OF APPROVAL BY BOARD OF COUNTY ROAD COMMISSIONERS

This plat has been examined and was approved on the 12th day of NOVEMBER 1957, by the Saginaw County Board of Road Commissioners.

The Board of County Road Commissioners of Saginaw County, Michigan, assume no responsibility for the improvement or maintenance of the Roads or Streets shown on this Plat until such time as the following conditions have been met and approved by this Board.

All Roads and Streets are to be graded and drained with necessary drainage structures installed and a roadway surface, which shall consist of crushed stone or natural gravel conforming to Michigan State Highway Department Specifications 21A. The surface shall have a minimum width of 18 feet and a compacted thickness of 6 inches. When crushed stone is used the top 2 inches shall be 21A with screenings added to provide a dense wearing course.

William M. Trim Chairman
Frank Dudewicz Member
Harold H. Bauer Member

CERTIFICATE OF APPROVAL BY THE COUNTY PLAT BOARD

This plat was approved by the County Plat Board of Saginaw County, Michigan, this 25th day of July 1957.

Clara P. Turek, Register of Deeds - Chairman
Benj. C. Wacker Auditor
William A. Case Auditor
John H. Deibel Auditor

COUNTY TREASURER'S CERTIFICATE RELATING TO TAXES
(Sec. 135, Act 206, 1893 as amended - Sec. 4134, C. L. 1915.)
Office of County Treasurer, Saginaw County

I hereby certify, that there are no tax liens or titles held by the State on the land described hereon, and that there are no tax liens or titles held by individuals on said lands, for the five years preceding the 10th day of June 1957, and that the taxes for said period of five years are all paid, as shown by the records.

This certificate does not apply to taxes, if any, now in process of collection by township, city or village collecting officers.

Carl O. Little County Treasurer

CERTIFICATE OF APPROVAL BY CITY PLANNING COMMISSION

This plat was approved by the City Planning Commission of the City of Saginaw, Michigan, at a meeting held on the 22nd day of October 1957.

John B. Dempsey Director

CERTIFICATE OF MUNICIPAL APPROVAL

This plat was approved by the Township Board of Saginaw Township, Saginaw County, Michigan, at a meeting held the 7th day of July 1957.

H. W. Hochthanner Township Clerk