

BAY WOODS ACRES No. TWO

PART OF THE N.E. 1/4, SEC. 10, T.12N.-R.4E.
SAGINAW TOWNSHIP, SAGINAW COUNTY, MICHIGAN

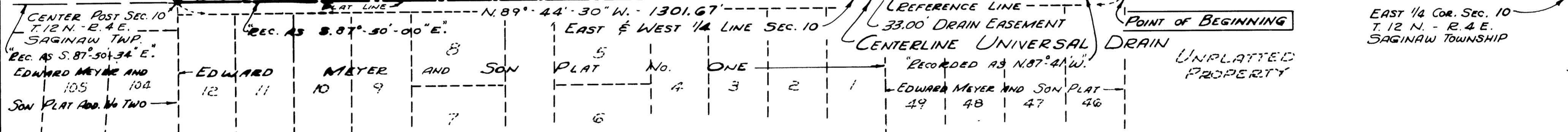
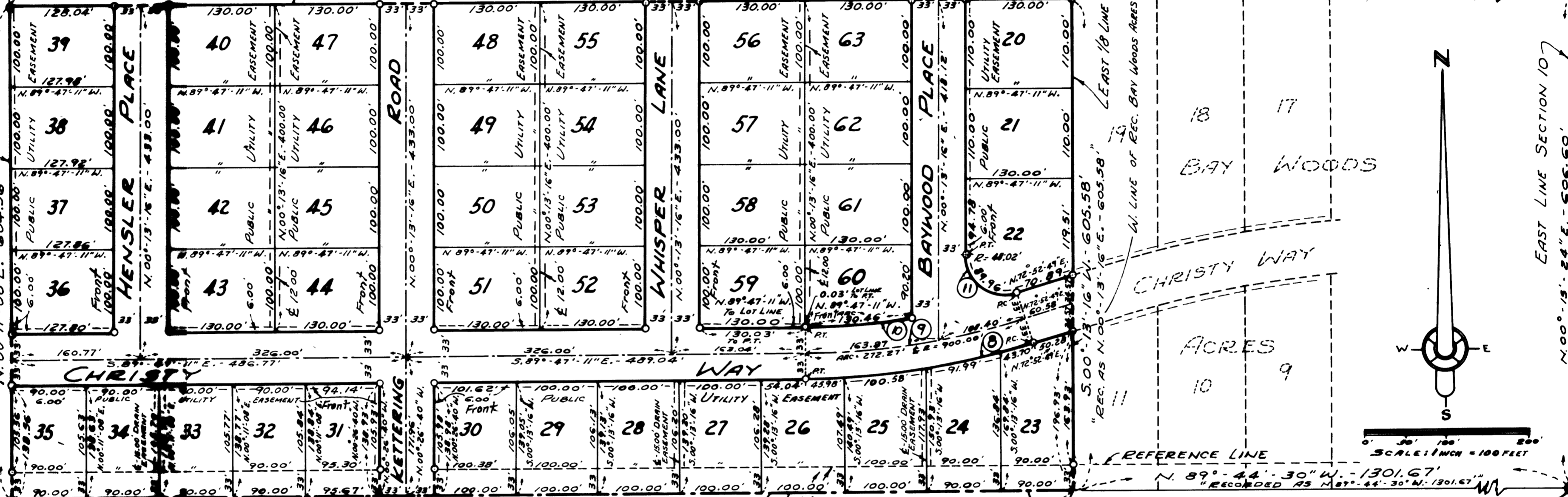
SPICER ENGINEERING COMPANY
SAGINAW, MICHIGAN
1969

UNPLATTED PROPERTY

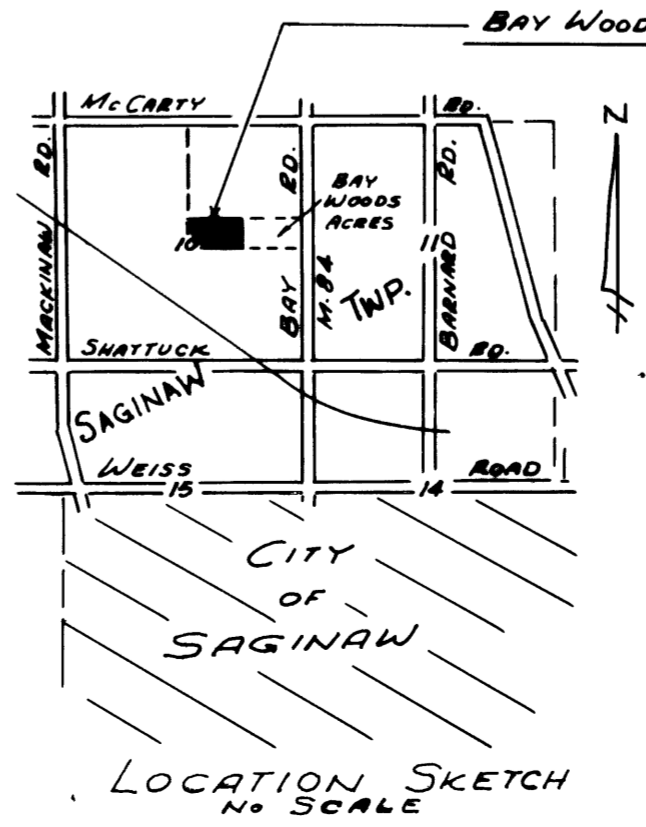
NORTH & SOUTH 1/4 LINE SEC. 10

UNPLATTED PROPERTY

NORTH LINE OF THE SOUTH 1/2 LINEAR INTERCEPT OF EAST AND WEST LINES OF THE SOUTH 1/2 OF NORTHEAST 1/4, SECTION 10
S. 89°-47'-11"E. - 1302.04'



EXAMINED AND APPROVED
Date Dec. 12, 1969
Allison Green
ALLISON GREEN
STATE TREASURER
By *Richard E. Lomas*
Richard E. Lomas, Plat Examiner



- LEGEND**
- 1- ALL DIMENSIONS ARE GIVEN IN FEET
 - 2- ALL CURVILINEAR MEASUREMENTS ARE ARC DISTANCES
 - 3- CONCRETE MONUMENTS HAVE BEEN PLACED AT ALL POINTS MARKED "O"
 - 4- SET SOLID IRON BARS 1/2" IN DIA. BY 18" IN LENGTH AT ALL LOT CORNERS
 - 5- BEARINGS ARE EXPRESSED IN RELATION TO THE TRUE MERIDIAN, AS DETERMINED FROM A SOLAR OBSERVATION OF 2-5-68
 - 6- (C) INDICATES CURVE NUMBER (SEE CURVE DATA TABLE HEREON)
 - 7- RECORDED BEARINGS OF ADJOINING PLATS ARE SHOWN ON PLAN.

CURVE DATA						
No.	DELTA ANGLE	RADIUS	ARC	CHORD	CHORD BEARINGS	TANGENT
8	17°-20'-00"	933.00'	282.23'	281.10'	S. 81°-32'-21" W.	142.21'
9	17°-20'-00"	900.00'	272.27'	271.23'	S. 81°-32'-21" W.	137.18'
10	17°-20'-00"	867.00'	262.29'	261.24'	S. 81°-32'-21" W.	132.15'
11	107°-20'-27"	48.02'	89.96'	77.37'	N. 53°-26'-57" W.	65.30'