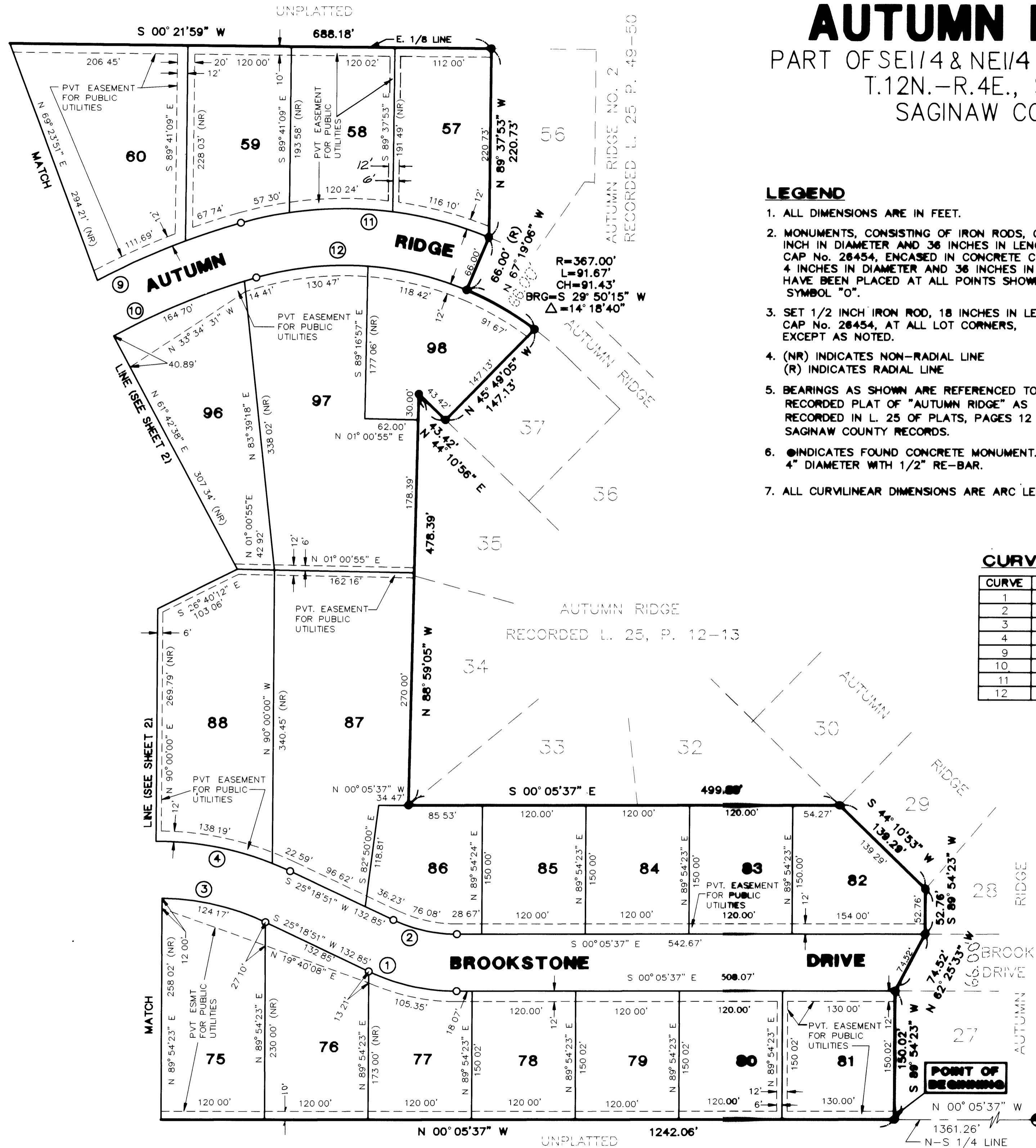


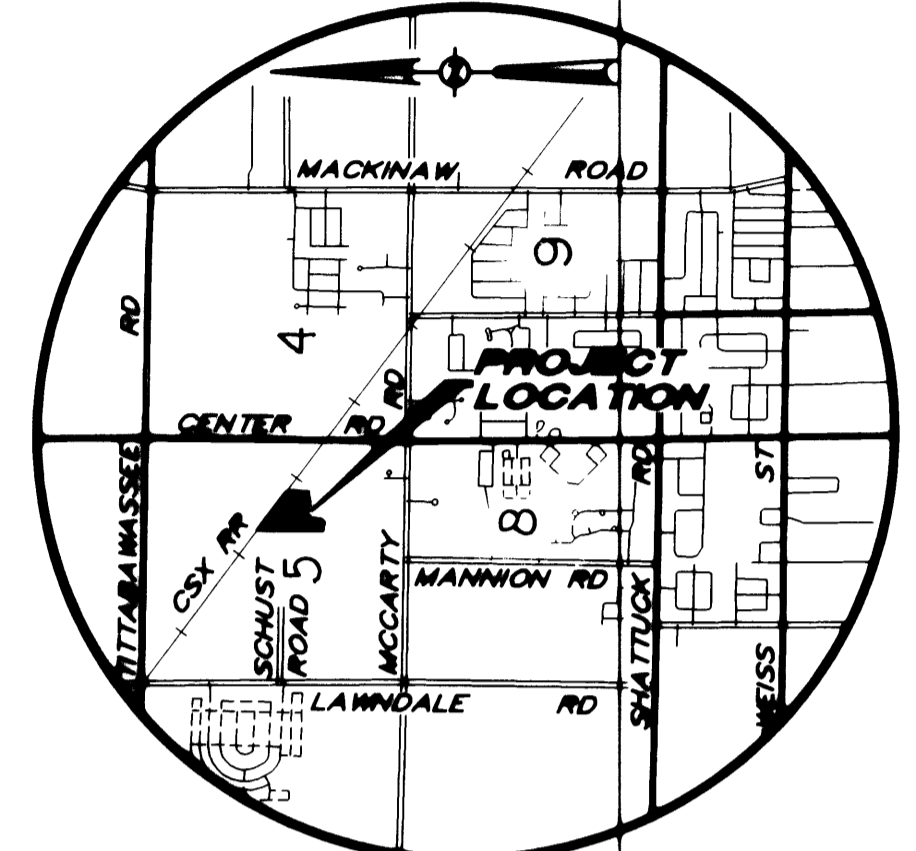
AUTUMN RIDGE NO. 3

PART OF SE 1/4 & NE 1/4 OF FRACTIONAL SECTION 5
T.12N.-R.4E., SAGINAW TOWNSHIP
SAGINAW COUNTY, MICHIGAN



LEGEND

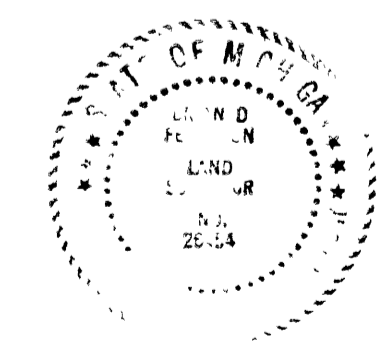
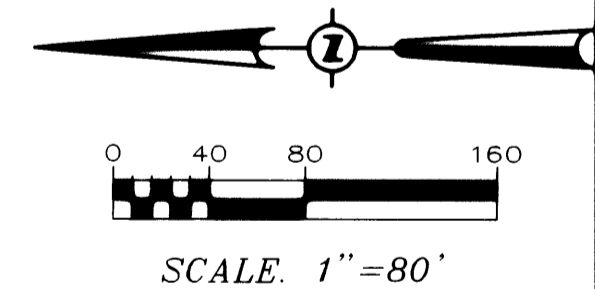
1. ALL DIMENSIONS ARE IN FEET.
2. MONUMENTS, CONSISTING OF IRON RODS, ONE HALF INCH IN DIAMETER AND 36 INCHES IN LENGTH WITH CAP No. 26454, ENCASED IN CONCRETE CYLINDERS, 4 INCHES IN DIAMETER AND 36 INCHES IN LENGTH, HAVE BEEN PLACED AT ALL POINTS SHOWN BY SYMBOL "O".
3. SET 1/2 INCH IRON ROD, 18 INCHES IN LENGTH WITH CAP No. 26454, AT ALL LOT CORNERS, EXCEPT AS NOTED.
4. (NR) INDICATES NON-RADIAL LINE
(R) INDICATES RADIAL LINE
5. BEARINGS AS SHOWN ARE REFERENCED TO THE RECORDED PLAT OF "AUTUMN RIDGE" AS RECORDED IN L. 25 OF PLATS, PAGES 12 & 13. SAGINAW COUNTY RECORDS.
6. ● INDICATES FOUND CONCRETE MONUMENT.
4" DIAMETER WITH 1/2" RE-BAR.
7. ALL CURVILINEAR DIMENSIONS ARE ARC LENGTHS.



LOCATION MAP
NOT TO SCALE

CURVE TABLE

CURVE	RADIUS	ARC	CHORD	BEARING	DELTA
1	237.57'	105.35'	104.49'	N 12° 36' 38" E	25° 24' 27"
2	171.57'	76.08'	75.46'	N 12° 36' 38" E	25° 24' 27"
3	290.00'	200.00'	196.06'	S 05° 33' 25" W	39° 30' 52"
4	356.00'	245.51'	240.68'	S 05° 33' 25" W	39° 30' 52"
9	864.51'	559.37'	549.66'	S 34° 42' 36" E	37° 04' 22"
10	798.51'	516.67'	507.70'	S 34° 42' 36" E	37° 04' 22"
11	433.00'	293.64'	288.05'	S 03° 15' 14" W	38° 51' 20"
12	367.00'	248.89'	244.14'	S 03° 15' 14" W	38° 51' 20"



Brian D. Ferguson
BRIAN D. FERGUSON, P.S.
NO. 26454

S 1/4 CORNER
SECTION 5,
T.12N.-R.4E.
L.C.R.C. L. 6, P. 168